

**STANDARD DEPARTURE
CHART -
VISUAL**

AERODROME ELEV 3848'
HEIGHTS RELATED TO
AD - ELEV **3848'**

27°39'00.00"S
023°00'00.00"E

SISHEN TIBA: 123.50

**SISHEN
RNAV VISUAL RWY17/35
XASMI/XATKU**

Departure Routes

Description:

XASMI RWY 17:

Depart RWY 17 to UNGEX. At UNGEX turn left onto 095°M to XASMI. At XASMI turn left onto 091°M to IMSUL or as directed by ATC.

XATKU RWY 35:

Depart RWY 35 to IXEPI. At IXEPI turn right onto 083°M to XATKU. At XATKU turn right onto 106°M to IMSUL or as directed by ATC.

NOTE:

1. Monitor FREQ 123.50MHZ from IMSUL INBD and on departure until in controlled airspace.
2. Maintain 5NM separation with all other aircraft.

WARNING:

1. Glider activity from time to time overhead Kuruman.

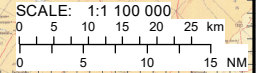
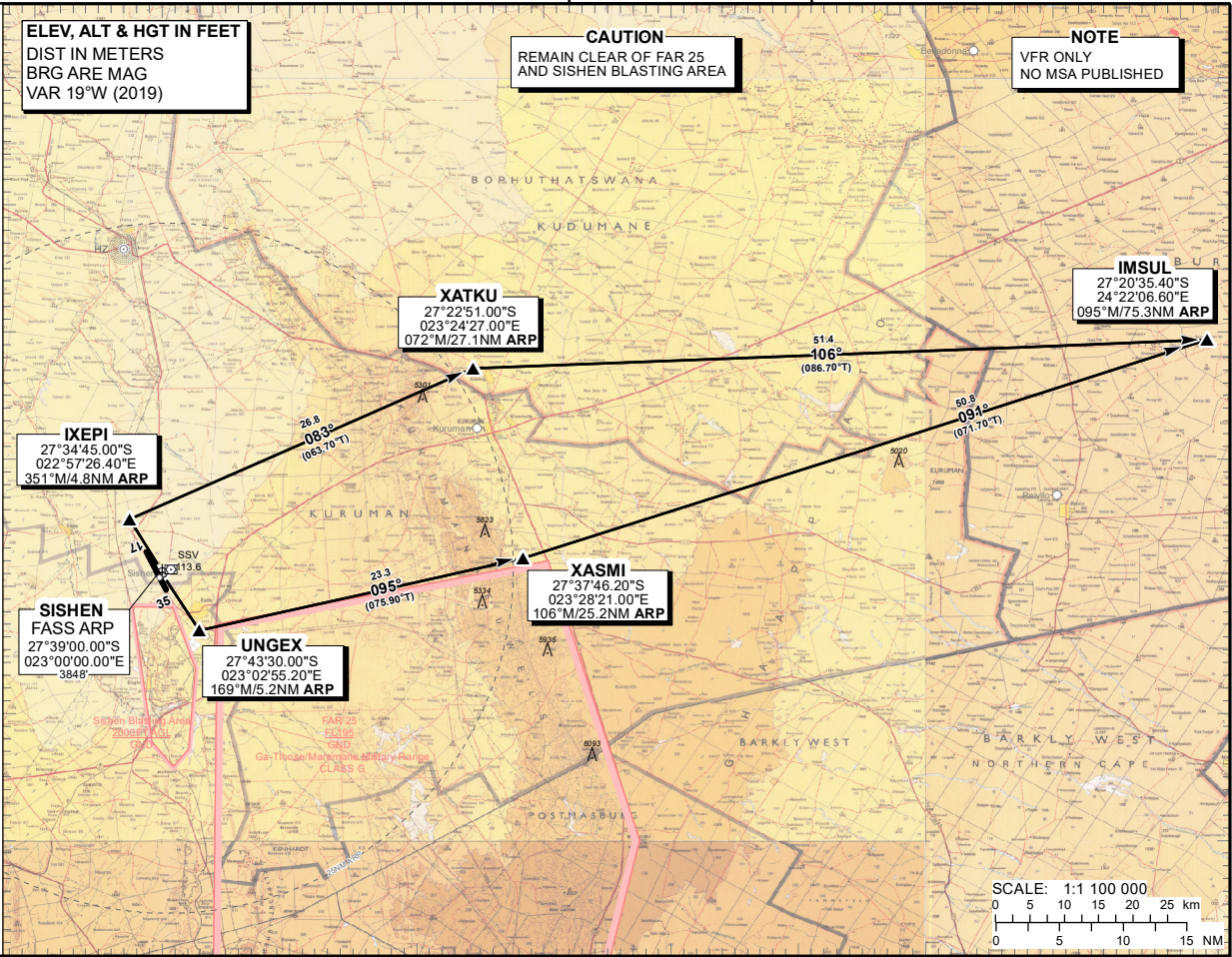
CHANGE: Bearings: UNGEX - XASMI

**ELEV, ALT & HGT IN FEET
DIST IN METERS
BRG ARE MAG
VAR 19°W (2019)**

CAUTION
REMAIN CLEAR OF FAR 25
AND SISHEN BLASTING AREA

NOTE
VFR ONLY
NO MSA PUBLISHED

27°0'S
27°10'S
27°20'S
27°30'S
27°40'S
27°50'S
28°0'S



EFF: 18 JUL 19

22°50'E 23°0'E 23°10'E 23°20'E 23°30'E 23°40'E 23°50'E 24°0'E 24°10'E 24°20'E